

Installation procedure for EvalColor

PRÉREQUISITE:

An operating system with a JAVA version containing the package javax.swing. It could be the version JAVA SDK 1.3 or 1.4 (based on JAVA 2). You can download the last version at <http://java.sun.com/j2se/1.4/download.html>.

The site <http://java.sun.com/j2se/1.4/install-windows.html> gives the instructions for the installation.

INSTALLATION

Put in the same folder

- The file EvalColor1.2.jar
- The folder IMAGES containing CIRCLE.JPEG, RELOAD.JPG, RETOUR.JPG
- The folder Excel containing the tables Evaluateur, Systeme, Resultat, Preference, TypeSysteme
And the tables QreProjet, QreEquipe, QreVieQuot ...
- The folder Aide containing the HTML pages for the Help
- The folder javazoom
- The folder org
- The folder sons containing 13 files : Boucle3sec.mp3, Flutedo5sec.mp3, FluteFa5sec.mp3, FluteLa5sec.mp3, FluteMi5sec.mp3, FluteSi5sec.mp3, FluteSol5sec.mp3, melodiebleu.mp3, melodiecyan.mp3, melodiejaune.mp3, melodiemagenta.mp3, melodierouge.mp3, melodievert.mp3.

These last files melodie are to be replaced by a file of your choice but their duration should not exceed 5 seconds.

START

The software EvalColor1.2 will ask you for a login and a password. You can choose admin, admin or a, a (for anonymous) which are in the file Evaluateur.xls

On MacOSX

Double-click on EvalColor1.2.jar

On Windows:

Start the program

(enter in a MS-DOS windows the command

java -jar nomfichier.jar (java space -jar space ...))

In a MS-DOS window, enter the command: java -jar nomfichier.jar (java space - jar space ...

If " *java -jar* "is not recognized, **the path** must be given to the system.

For that, click on *Start* and choose in the *Parameters*, the *Panel of configuration*.

Once in the panel, choose *System* (double click)

The window *System* has several tabs, click on *Advanced* then *Setting variables*

Select the variable *PATH* and edit it. Then give the path where is located *java.exe*.

for example:

C:\java\jdk1.3.1\bin

Note : The package Jlayer is included in the jar EvalColor1.2.jar

On Linux:

After the installation of the JDK, you'll find the Java Kit in the directory:
usr/java/j2sdk1.4.0

You will have also to uninstall the older version of JDK (Linux has a graphic interface help onig to desinstall) and to create the path for this new version.

Start the program:

In order to start the program, enter in a windows Shell the command :

java -jar nomfichier.jar (*java space -jar space ...*)

If "*java -jar*" is not recognized, you have to give the path to the system (see Create the Path)

Create the Path:

On */etc/profile* edit *profile* (with *vi profile*) add the *PATH* :

PATH :\$PATH/usr/java/j2sdk.1.4.0/bin

Then load it with the command

./etc/profile

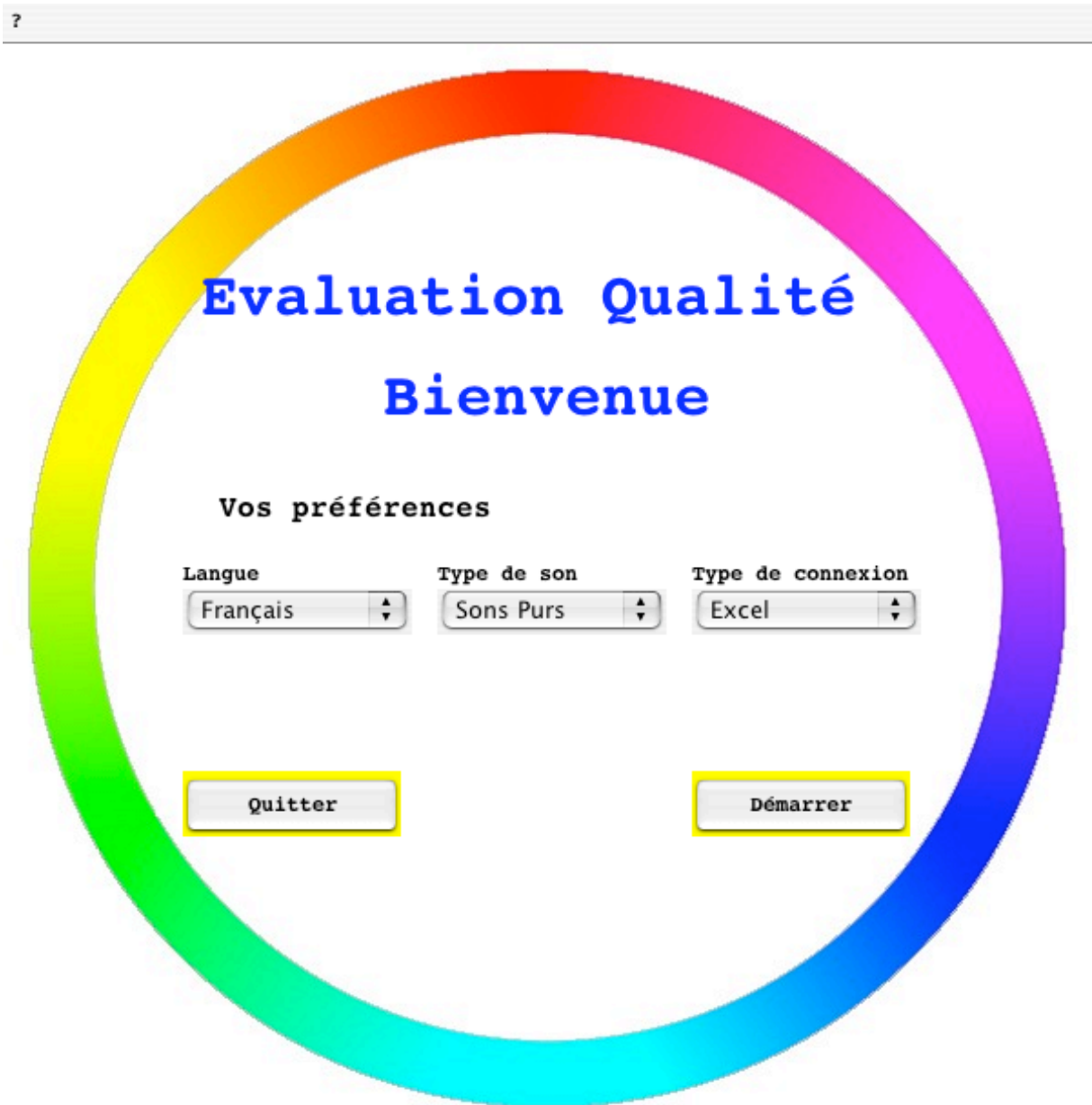
Now you can use java without entering each time:

/usr/java/j2sdk.1.4.0/bin/java

Note: The plug-in for reading the sounds MP3 & *the MP3 sounds* & is necessary.
The package Jlayer is included in the jar

Installation successful

You should get the following home page



If the chromatic circle - ring of colours – does not appear, the file CIRCLE.JPEG is not in the sub-folder images of the starting folder –root folder for the jar -.
The table Evaluateur is containing several records for the following page which is the Login page. Two fo these lines are: login a, password a, and login admin, password admin.

CREATION OF THE DATA BASES:

Create the bases

If you choose a connection Access or MySQL, define and create the data base named *lienEC* with the same table names than the tables with the following attributes:

Evaluateur: login ; password ; name ; first name ; function

Preference: typeBD ; typeSound ; Language

Systeme: login ; typeSystem ; nomSystem

TypeSysteme:

Resultat: login ; typeSysteme ; nomSysteme ; day ; modeEval ; note1 ; note2 ; note3 ; note4 ; note5 ; note6 ; nameEvaluator ; dateBegin, dateEnd

The dates are in the format Day-Month-Year

The software has no page for entering new evaluators, so you or your database administrator has to define the new users in the table *Evaluateur*.

Create the sources of data ODBC :

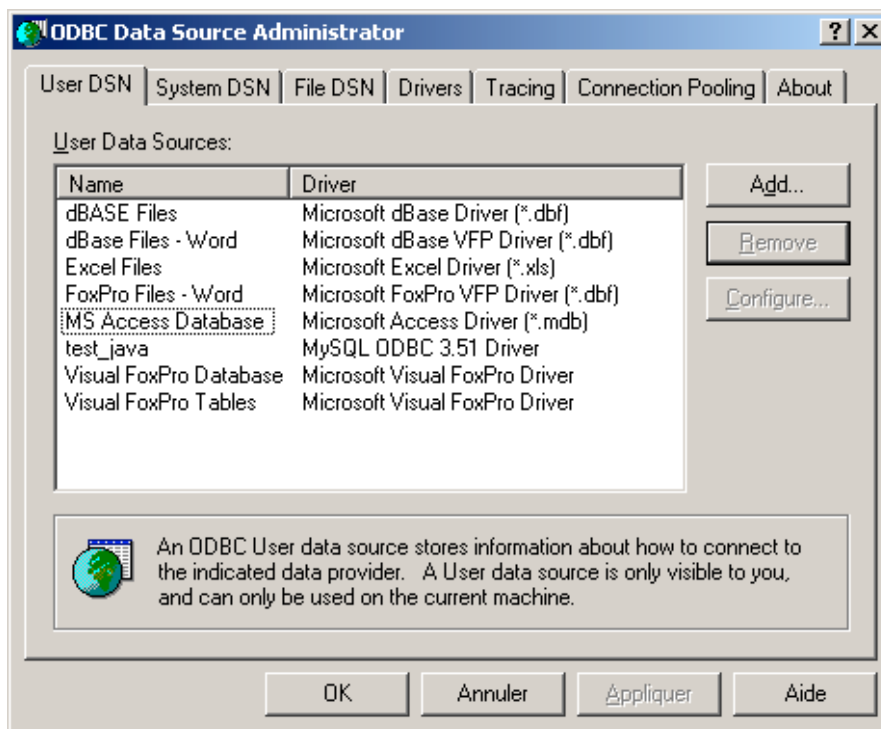
Then define the source ODBC corresponding to the base:

For Access, the source name is: *lienEC*

For MySQL, the source name is : *lienECMySQL*

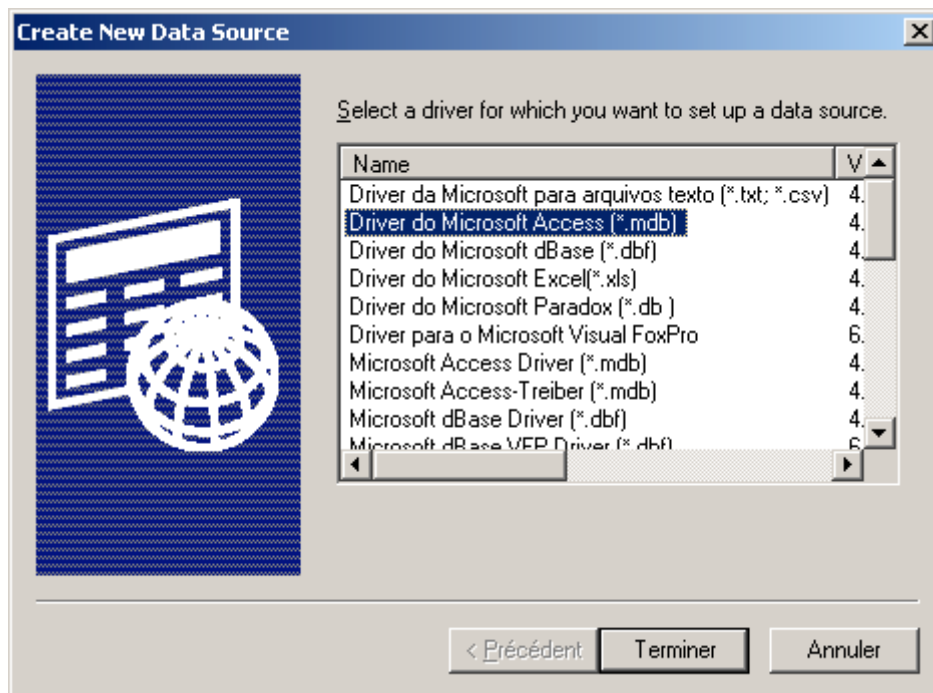
Here is an example for Windows (for other OS, refer to your administrator) :

- Click on Start then Parameters and Panel of configuration
- In *Panel of configuration* double-click on *Tools of administration*
- In *Tools of administration* go to *Source ODBC*
- Click on *Add*.

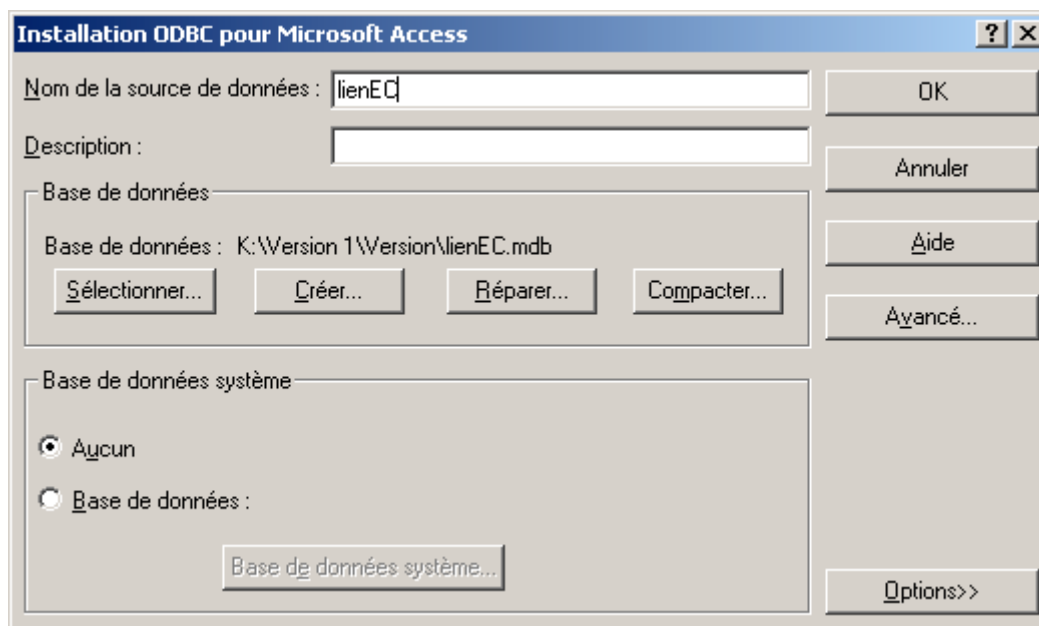


For Access :

- Double-click on the driver corresponding to *Access*.

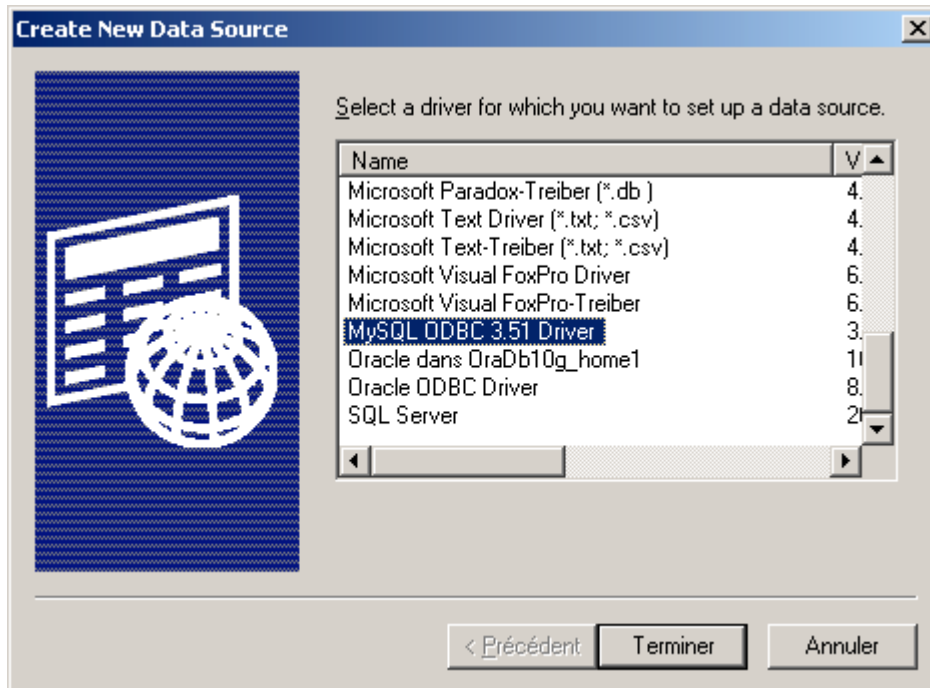


Select the database lienEC and give it the same name.
Then click OK. The source of data has been added.



For MySQL :

Double-click on the Driver corresponding to ODBC MySQL (check that it is well installed)



- The name of the source is lienECMySQL
- The server is by default localhost but it could be another server (see with your DBA, Data Base Administrator).
- The User : either the root as you are the administrator, either you are a user and you connect with your account.
- The data base: Choose lienEC.
- Click on OK. The source is created.

